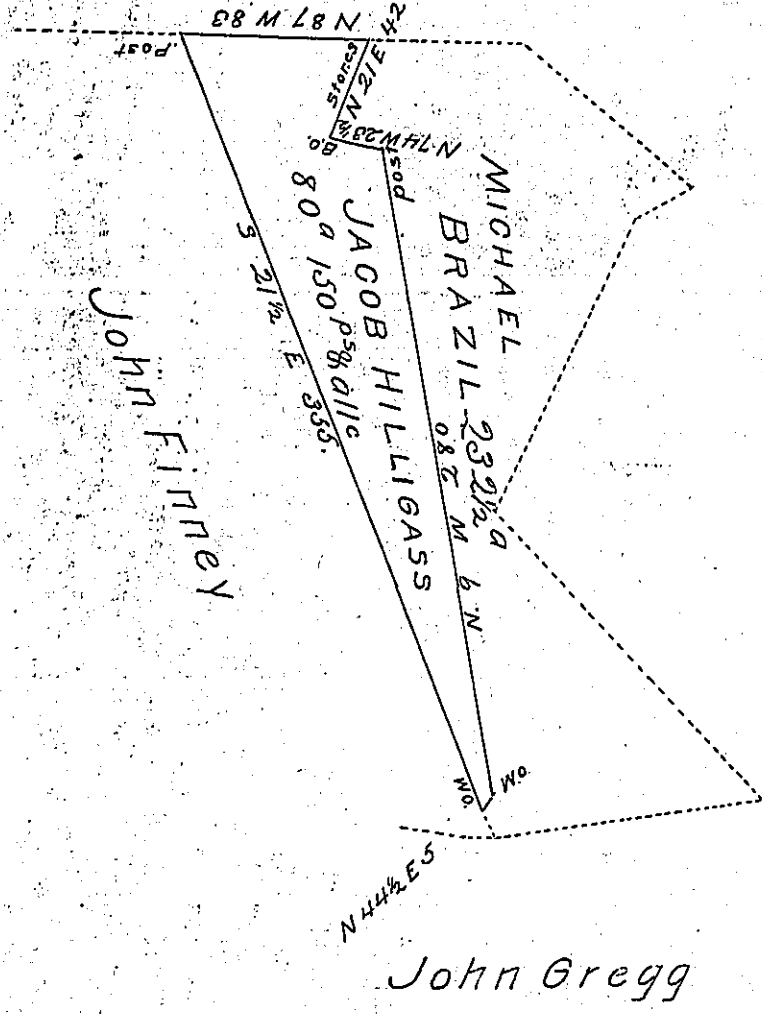


John McClelland
now James Burns



Situate on the Waters of the Shawanese
Cabin Creek in Napier Township Bedford
County being part of a larger tract of 232 1/2
Acres of land Surveyed to Michael Brazil
On Warrant dated 10th Aug^t 1765

Resurveyed for Jacob Hilligass the 20th
day of October 1836. Containing 80^a 150^p 8
allowance of Six p^c Cent. & C.

Wm A. Vickroy D.C.

To John Taylor Esqr
S.G.

IN TESTIMONY that the above is a copy of the original remaining on file in
the Department of Internal Affairs of Pennsylvania, made
conformably to an Act of Assembly approved the 16th day of
February, 1833, I have hereunto set my Hand and caused
the Seal of said Department to be affixed at Harrisburg,
this fourth day of January 1904



Gene P. Brown
Secretary of Internal Affairs.